

# ACTION PLAN

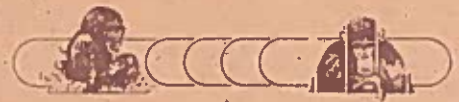
FOR *Pan paniscus*!

Report on Free Ranging Populations  
and Proposals for their Preservation.



**COMPILED AND WRITTEN BY:**

Nancy Thompson-Handler,  
Richard Malenky  
and Gay Reinartz



*Primate  
Conservation, Inc.*



SPECIES SURVIVAL COMMISSION

**Legend Figure 1.**

**DIRECT EVIDENCE**

LOCATION	LONGITUDE	LATITUDE	MAP REF.
Wamba	22.30 E	00.10 N	● 1
Lomako	21.05 E	00.50 N	● 2
Lilungu	23.01 E	01.07 S	● 3
Yalosidi	23.14 E	02.00 S	● 4
Lac Tumba	17.58 E	00.53 S	● 5
Botsina	22.00 E	01.05 S	● 6
(Lokata Station)			
Beongo	20.36 E	01.01 N	● 7
Yasa	21.24 E	03.42 S	● 8
Mimia	20.00 E	02.29 S	● 9

**SALONGA NATIONAL PARK  
AND ENVIRONS  
(INDIRECT EVIDENCE)**

LOCATION	LONGITUDE	LATITUDE	MAP REF.
N of Monkoto	20.40 E	01.35 S	22
E of Nongo	20.42 E	01.06 S	A
SE of Bamata	21.10 E	01.09 S	B
SE of Monkoto	20.37 E	01.43 S	C
NE of Tumba	20.11 E	01.53 S	D
S of Ila	21.04 E	02.56 S	E
N of Anga	21.34 E	03.07 S	F
NE of Dekese	21.27 E	03.25 S	23

**INDIRECT EVIDENCE**

LOCATION	LONGITUDE	LATITUDE	MAP REF.
Mbandaka	18.46 E	00.03 N	Mbandaka
Penzele	19.40 E	00.07 N	○ 2
Befale	20.48 E	00.24 N	○ 3
Basankusu	19.48 E	01.13 N	○ 4
Bokote	20.08 E	00.06 S	○ 5
Elanga-limono	18.56 E	00.24 S	○ 6
Ilenge	20.49 E	00.27 S	○ 7
Ekwayolo	18.16 E	00.46 S	○ 8
Bikoro	18.06 E	00.46 S	○ 9
Inongo	18.17 E	01.57 S	○ 10*
Selenge	18.11 E	10.58 S	○ 11*
Lobeke	18.16 E	02.22 S	○ 12*
Duma	18.39 E	02.57 S	○ 13*
Kwamouth	16.31 E	03.11 S	○ 14*
Nteno	19.08 E	03.16 S	○ 15*
Bongimba	20.02 E	03.23 S	○ 16*
Oshwe	19.30 E	03.24 S	○ 17*
Kole	22.26 E	03.28 S	○ 18
Panu	19.07 E	03.48 S	○ 19
Mangai	19.32 E	04.02 S	○ 20

\* see discussion

Figure 1. Current Distribution of Bonobos from Direct and Indirect Evidence.

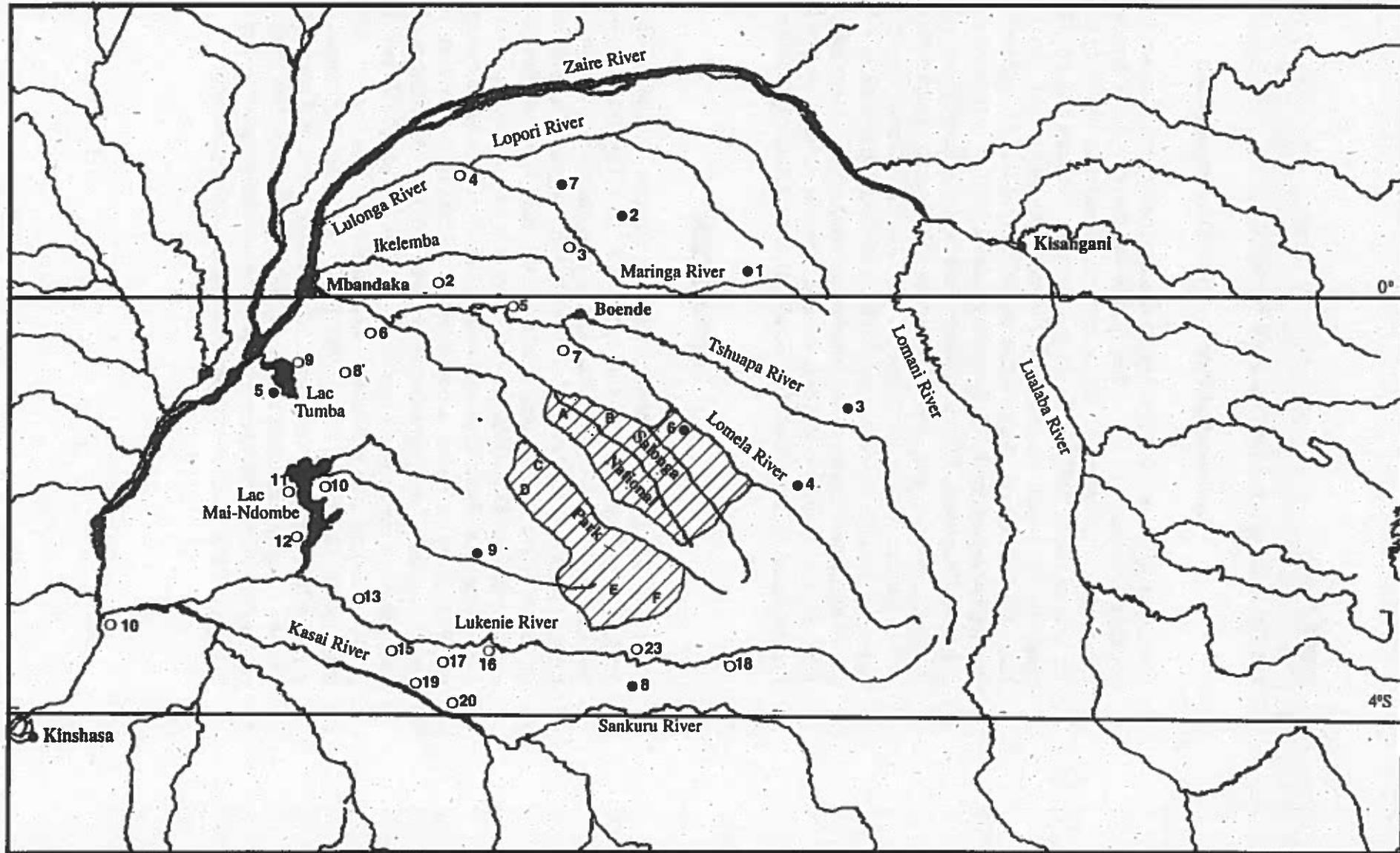


Figure 2. Comparative vegetation of the Wamba and Lomako Forest study areas based on 1989 NOAA-AVHRR data (adapted from Justice, Laporte and Horning 1993).

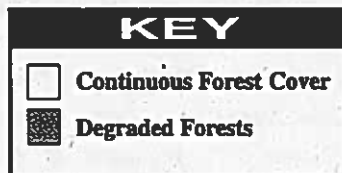
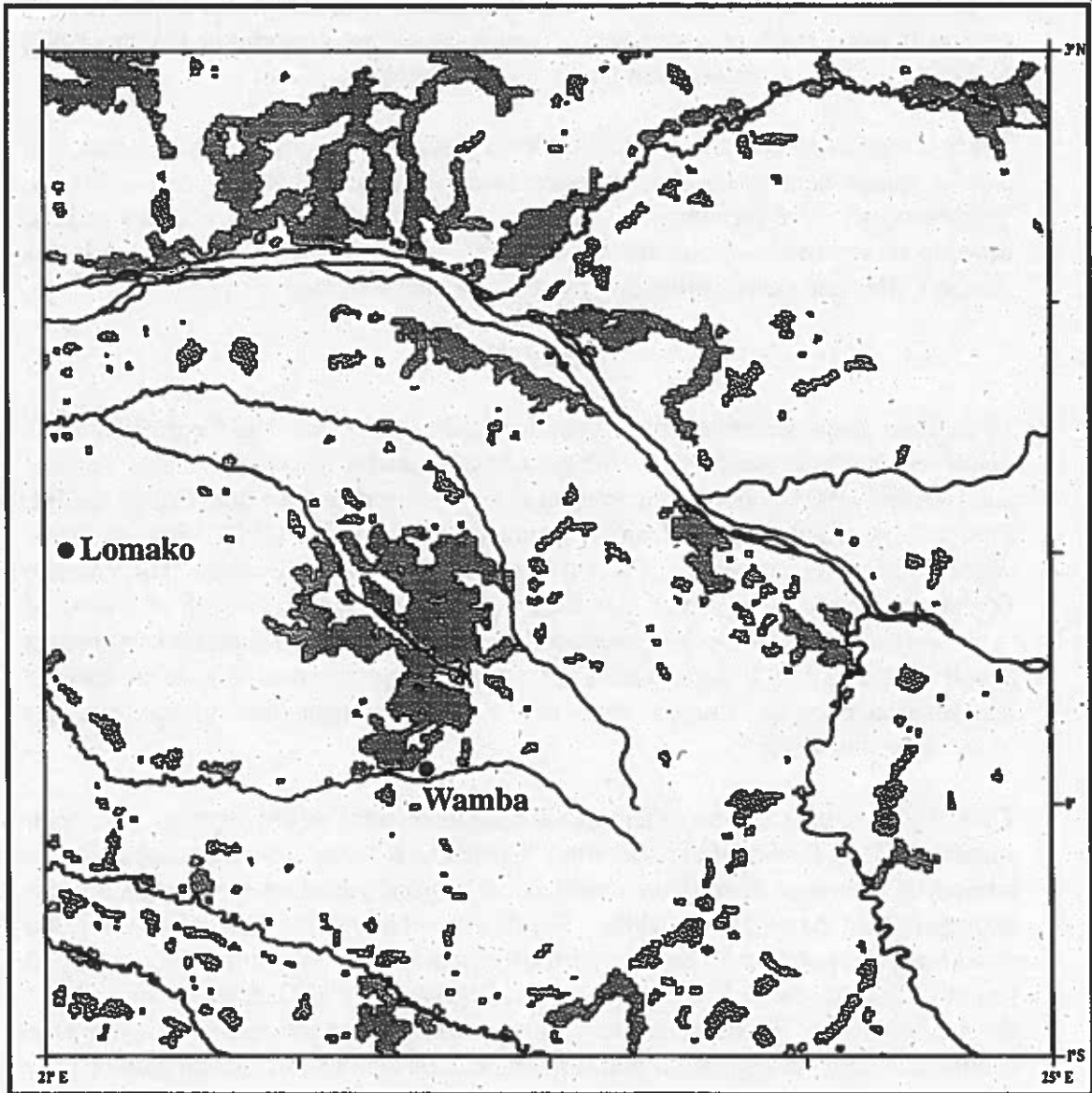
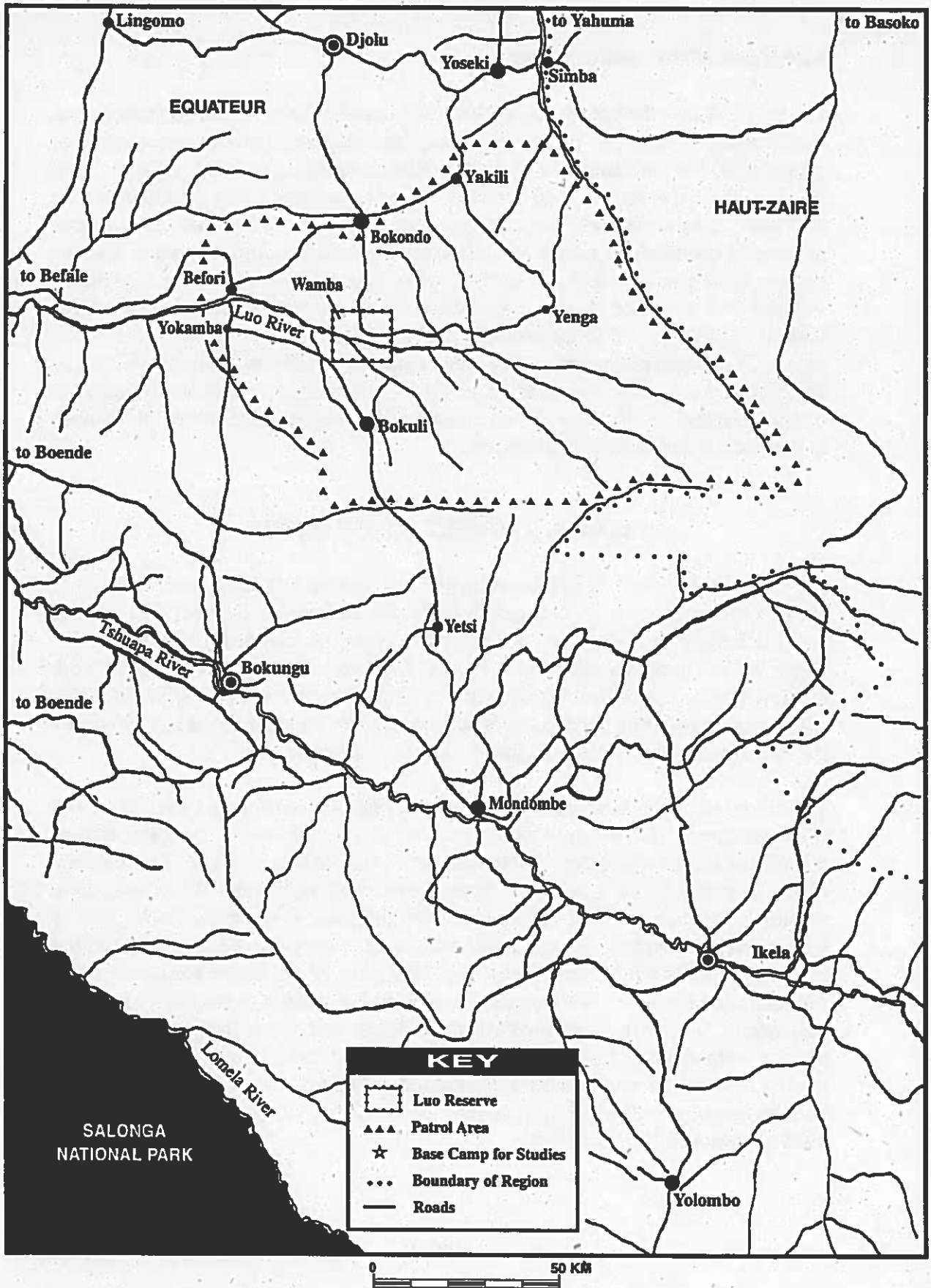




Figure 3. Luo Scientific Reserve and Protection Area.



**Legend Figure 4.**

<b>Survey Block (Area)</b>	<b>NW Corner</b>	<b>SE Corner</b>
1. Between Lomami and Lualaba Rivers (46,720 km <sup>2</sup> ) Block 1A Block 1B	24.10E, 0.00 25.00E, 1.20S 26.00E, 3.00S	24.45E, 1.20S
2. South of Lukenie River (53,193 km <sup>2</sup> )	19.00E, 3.10S 22.40E, 4.20S	
3. Lomako Forest (3,800 km <sup>2</sup> )	20.52E, 1.12N 21.38E, 0.45N	
4. Salonga National Park (36,560 km <sup>2</sup> )	see map	see map
5. Headwaters between Tshuapa and Lomela Rivers (6,200 km <sup>2</sup> )	23.45E, 3.00S 24.45E, 3.30S	
6. Between the Lopori and Lomami Rivers (5,668 km <sup>2</sup> )	22.45E, 0.45N 24.15E, 0.00N	
7. Lac Mai Ndombe (13,861 km <sup>2</sup> )	18.00E, 1.20S 18.40E, 3.00S	
8. Between Lulonga and Ikelemba Rivers (7,637 km <sup>2</sup> )	18.20E, 1.00N 19.15E, 0.20N	

Figure 4. Proposed Sites for Surveys in the Central Basin.

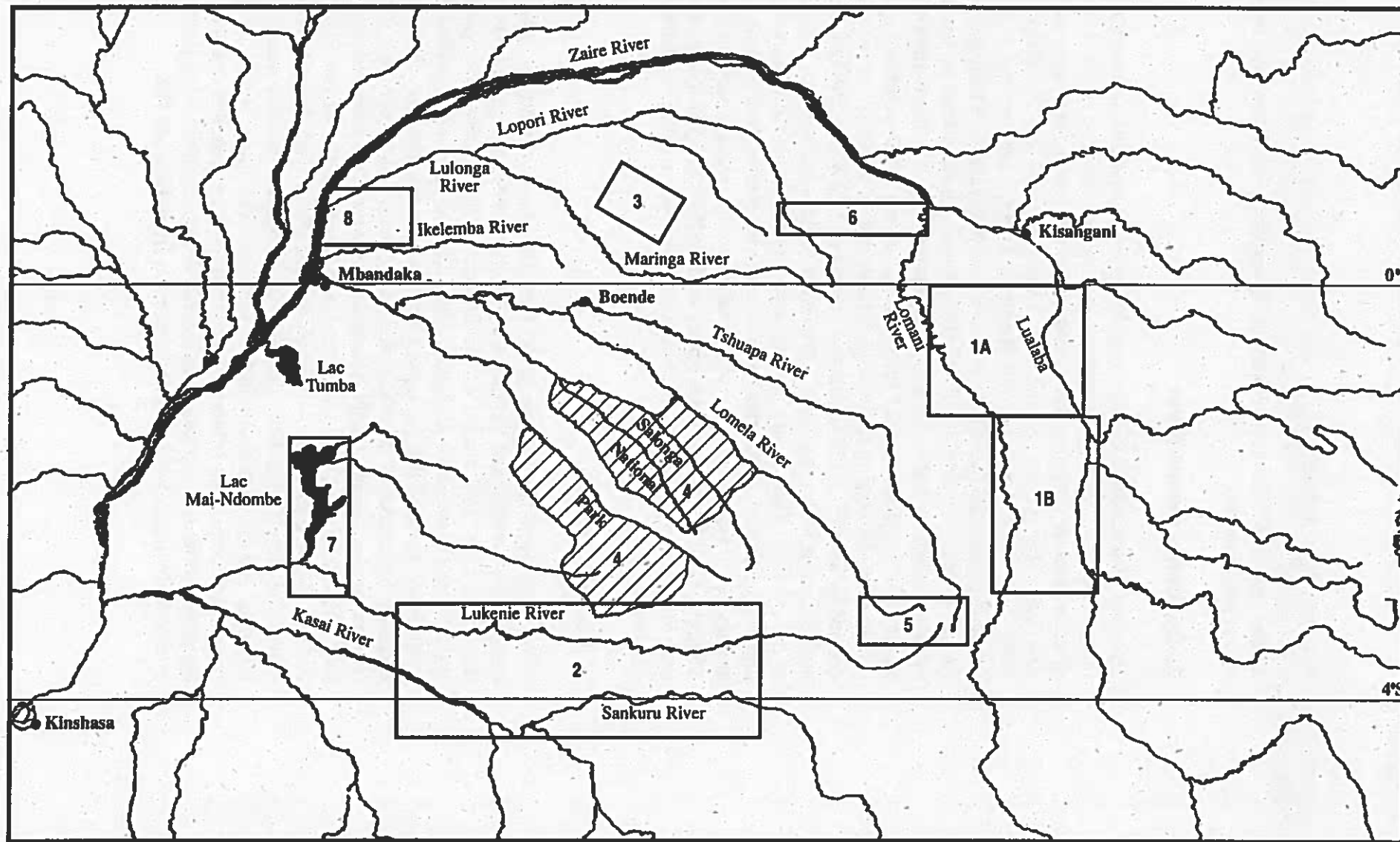


Figure 5. Bonobos of the Lomako Reserve.

